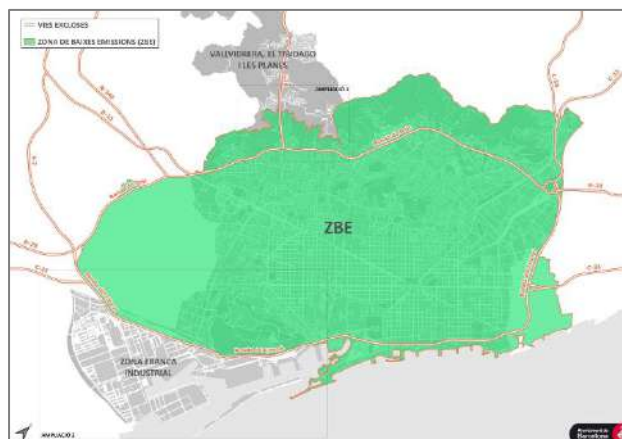


ZBE INFORMATION FOR BARCELONA VISITORS

From 1 January 2020 onwards, **traffic of the most polluting vehicles in the area inside Barcelona's ring roads will be restricted between 7 am and 8 pm on working days from Monday to Friday**. This means that the most polluting vehicles will not be able to drive in the **low emissions zone (ZBE; comprising Barcelona, L'Hospitalet de Llobregat, Sant Adrià de Besòs and part of Esplugues de Llobregat and Cornellà de Llobregat)**.




Map from Ajuntament de Barcelona

SPANISH VEHICLES



CHECK YOUR LICENSE PLATE NUMBER [HERE](#)

- **Spanish vehicles complying with environmental requirements** can move **without authorization**. 

- **Spanish vehicles that do not meet the environmental requirements** will be able to obtain a permit to travel in the ZBE for **10 days a year** during restricted hours (weekdays, Monday to Friday, from 7 am to 8 pm). Once the registration has been made, the **daily authorization** (cost 2 € / day) can be requested until 23.59 h the day before. 




[SIGN UP HERE](#) for the authorization.

FOREIGN VEHICLES



ALL FOREIGN VEHICLES THAT ARE GOING TO VISIT BARCELONA MUST [SIGN UP](#) (COST 5 €) TO OBTAIN ONE OF THE FOLLOWING AUTHORIZATIONS

- **Foreign vehicles that meet the environmental requirements** must sign up to obtain an **authorization for 2 years**. 

- **Foreign vehicles that do not meet the environmental requirements** will be able to obtain a permit to travel in the ZBE for **10 days** a year in restricted hours (weekdays, Monday to Friday, from 7.00 am to 8.00 pm). Once the registration has been made, the **daily authorization** (cost 2 € / day) can be requested until 23.59 h the day before. 



[SIGN UP HERE](#) (cost 5€) to obtain one of the previous authorizations.

 For more information, check the following website: <https://www.zbe.barcelona/en/index.html>